



### GENERAL INFORMATION

Type of Vessel	Geotechnical Survey
Year of Build	1984
Reconfigured	2016
Flag	Panama
Port of Registry	Panama
Call Sign	HP6188
IMO Number	8405440
MMSI Number	351149000
Owner & Operator Information	GARDLINE LTD
Classification Society	Bureau Veritas
DP Class	DP2

### CAPACITY

Fuel Oil Capacity	786.90 m <sup>3</sup>
Freshwater Capacity	176.80 m <sup>3</sup>
Ballast Water Capacity	1284.80 m <sup>3</sup>

### DIMENSIONS

Length Overall (m)	68
Breadth (beam) (m)	16.8
Depth (m)	6.6
Draft (m)	4.9 - 5.4
Air Draft (m)	26.6
GT (t)	2182
NT (t)	655

### MACHINERY AND PERFORMANCE

Main Engine(s) Type and Power output	Niigata Pielstik 8PA5L (4x1300 kW)
Propulsion System	2x Azimuth Thrusters 2x Bowthrusters
Speed	Eco 8 kts Max 10 kts Transit 9 kts

**ACCOMMODATION**

Accommodation: Nos. of Cabins	
Single	19
Double	7
Additional	1 x Quad, 1 x Hospital
Total Berths	37
Laboratories	Geotechnical Lab
Workspaces for Onboard	
Laboratory	26m <sup>2</sup>
Workspaces for Onboard Data	
Interpretation / Office	26m <sup>2</sup>
Dedicated space for soil	
sample storage	26m <sup>2</sup>
Passenger Capacity	Nil
Facilities Available	Gym, TV Lounge

**SAFETY**

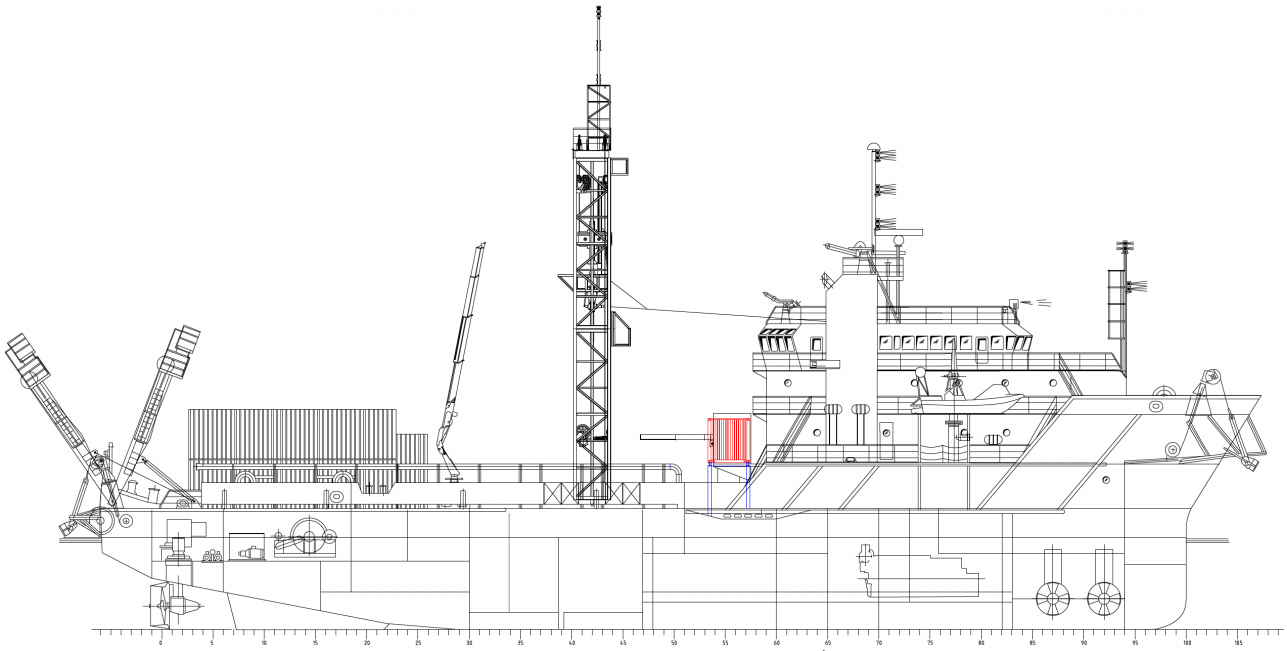
Lifeboats and Life Rafts	6x inflatable liferafts <sup>(25 pax)</sup>
Firefighting Equipment	SOLAS-compliant FFE
Pollution Prevention	MARPOL-compliant SOPEP

**NAVIGATION AND COMMS**

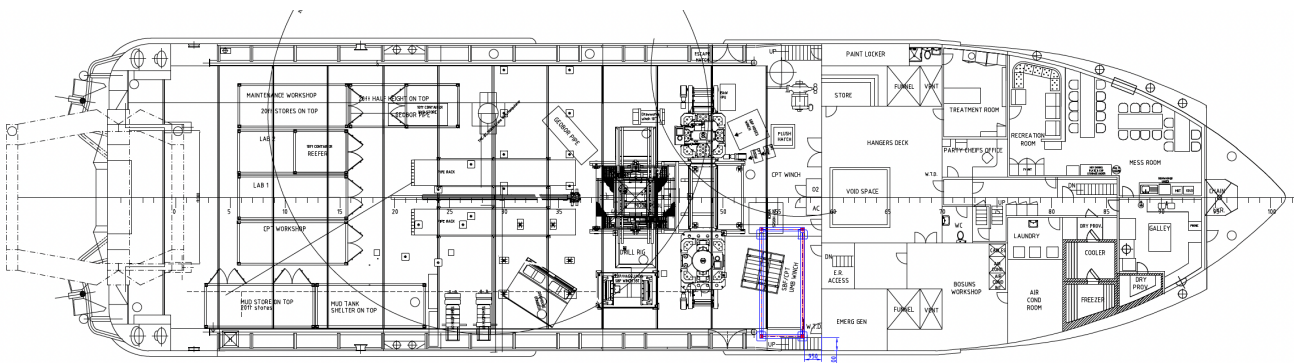
Advanced Radar Systems	Furuno FAR-2117 FAR-1518
Positioning / Nav Systems	Furuno GP-150 GPS
DPS	C-Nav 3050 DGPS
Comm Equipment	Sailor <sup>(VHF DSC, MF/HF DSC &amp; SAT-C)</sup> <sup>(VHF, HR, SATCOM)</sup>
AIS	Furuno FA-170 AIS

**SURVEY EQUIPMENT**

Rotary Drilling Equipment for BH (API)	GL100 rig
Rotary Drilling Equipment for BH (Geobor-S)	GL100 Piggyback rig
Drill String Max Length	200m bsb with 600m water depth
Heave Compensation System	5m SBF & drill string
Mud System	Straight flush system, 12000 litre mud tanks with 3 compartments, 2x mud pumps
DtH In-Situ Testing Equipment	CPT, Seismic CPT, PS Logging, 3-Arm Calliper
DtH Sampling Equipment	Piston Sampling, Push Sampling, Hammer Sampler
DtH Coring Equipment	PQ3 Coring Triple-Tube Coring Geobore-S Coring Triple-Tube Coring
Geotechnical Soils/Processing Lab	Yes
Data Processing and Analysis Facilities Onboard	Yes
Deep Seabed CPT Unit	200kN Seabed CPT
Seismic CPT	Yes
Vibrocorers	Can be mobilised
CPT	Neptune can be mobilised
Other	In situ DtH HiRAT



**SIDE VIEW - PORT SIDE**



**TOP VIEW - DECK LEVEL**